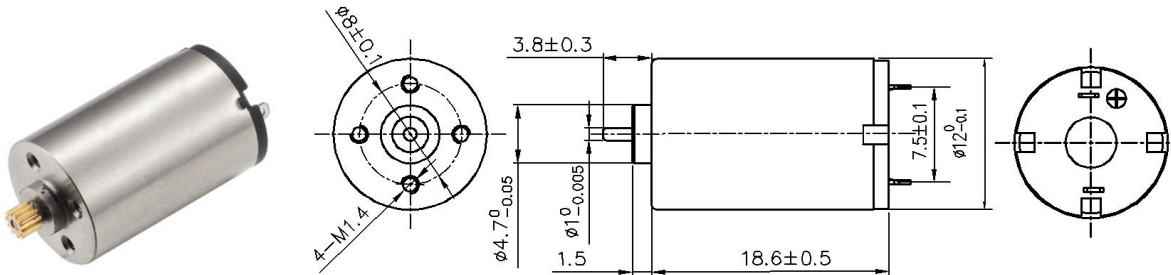


1218R Coreless Brush Motor

Coreless Brush Motors



Typical Applications: RC servo. Aircraft robot. Mini robot

电机参数 (Motor data)		05A	04A	06A	02A
额定电压下数值 (Values at nominal voltage)					
1 额定电压 (Nominal voltage)	V	7.4	7.4	11.1	11.1
2 空载转速 (No load speed)	rpm	20400	16700	15920	16520
3 空载电流 (No load current)	mA	40	20	15	20
4 额定转速 (Nominal speed)	rpm	17300	13760	13280	13860
5 额定转矩 (最大连续转矩) (Nominal torque)	mNm	1	1	1	1
6 额定电流 (最大连续电流) (Nominal current)	A	0.33	0.25	0.17	0.18
7 堵转转矩 (Stall torque)	mNm	6.5	5.7	6	6.13
8 堵转电流 (Stall current)	A	1.92	1.36	0.92	0.97
9 最大效率 (Max efficiency)	%	76	79	75	76
电机常数 (Motor constant)					
10 相间电阻 (Terminal resistance)	Ω	3.85	5.44	12.06	11.39
11 转矩常数 (Torque constant)	mNm/A	3.39	4.15	6.53	6.29
12 速度常数 (Speed constant)	rpm/V	2757	2257	1434	1488

其他特性参数 Other characteristic parameters

- 13 环境温度范围 (Ambient temperature) -10~40°C
- 14 绕组最高允许温度 (Max permissible winding temperature) 80°C
- 15 最高允许转速 (Max permissible speed) 30000rpm
- 16 电极磁极对数 (Number of the pole pairs) 1
- 17 换向器片数 (Number of the commutator segments) 5
- 18 电机质量 (Weight) 9.2g

02A电机曲线图 motor curve

